

Worklist: 1797

BWylee

<u>LAB_CASE</u>	<u>ITEM</u>	<u>TASK_ID</u>	<u>DESCRIPTION</u>	
M2017-2257	1	89072	AM 14 Blood Cannabinoids by	
M2017-2274	1	89073	AM 14 Blood Cannabinoids by	
M2017-2384	1	89075	AM 14 Blood Cannabinoids by	
M2017-2414	1	89076	AM 14 Blood Cannabinoids by	
P2017-1304	1	89079	AM 14 Blood Cannabinoids by	
P2017-1341	1	89080	AM 14 Blood Cannabinoids by	
P2017-1366	1	89081	AM 14 Blood Cannabinoids by	
P2017-1391	1	89082	AM 14 Blood Cannabinoids by	
P2017-1412	1	89083	AM 14 Blood Cannabinoids by	
P2017-1428	1	89084	AM 14 Blood Cannabinoids by	

Worklist Report

Worklist Path: C:\MassHunter\ISP Methods\worklists\CS CANN 071117.wkl
 Date Modified: 07/11/2017 01:49:20 PM
 Date Printed: 07/11/2017 01:49:29 PM

Worklist Run Parameters

Operator Name: 62340
 Run Type: Standard Start
 Part of Method to Run: Acquisition Only
 Execution for Acquisition-DA: Synchronous
 Acquisition Method Path: C:\MassHunter\ISP Methods\Acquisition
 DA Method Path: D:\MassHunter\methods
 Data File Path: C:\MassHunter\Data\2017\CANN\071117 CANN CS
 Pre-Worklist Script: ---
 Post-Worklist Script: SCP_InstrumentStandby(){MH_Acq_Scripts.exe}
 Acquisition Clean Up Script: ---
 Overlapped Injection: No
 Clear sample selection after run: Yes
 Wait Time for Ready(Min): 10
 Threshold Disk Value(GB): 10
 Comment: ---

Plate Barcode Information

Plate	Barcode
P1	
P2	

Worklist Table

Sample Position	Sample Name	Method	Data File	Sample Type	Level Name	Comment	Info.
P1-C1	Blank	isp blood cannabinoids Poky 2016-3.m	MJ-Blank1.d	Blank		AM 6.1.2 Cannabinoids by LCQQQ	
P1-C1	Blank	isp blood cannabinoids Poky 2016-3.m	MJ-Blank2.d	Blank		AM 6.1.2 Cannabinoids by LCQQQ	
P1-C2	Blood: 1_5 ng/mL	isp blood cannabinoids Poky 2016-3.m	MJ-CAL1.d	Calibration	1	AM 6.1.2 Cannabinoids by LCQQQ	c-THC @5ng/mL, all others @1 ng/mL
P1-C3	Blood: 2_10 ng/mL	isp blood cannabinoids Poky 2016-3.m	MJ-CAL2.d	Calibration	2	AM 6.1.2 Cannabinoids by LCQQQ	c-THC @10ng/mL, all others @2 ng/mL
P1-C4	Blood: 5_25 ng/mL	isp blood cannabinoids Poky 2016-3.m	MJ-CAL3.d	Calibration	3	AM 6.1.2 Cannabinoids by LCQQQ	c-THC @25ng/mL, all

Sample Position	Sample Name	Method	Data File	Sample Type	Level Name	Comment	Info.
							others @5 ng/mL
P1-C5	Blood: 10_50 ng/mL	isp blood cannabinoids Poky 2016-3.m	MJ-CAL4.d	Calibration	4	AM 6.1.2 Cannabinoids by LCQQQ	c-THC @50ng/mL, all others @10 ng/mL
P1-C6	Blood: 25_125 ng/mL	isp blood cannabinoids Poky 2016-3.m	MJ-CAL5.d	Calibration	5	AM 6.1.2 Cannabinoids by LCQQQ	c-THC @125ng/mL, all others @25 ng/mL
P1-C7	Blood: 50_250 ng/mL	isp blood cannabinoids Poky 2016-3.m	MJ-CAL6.d	Calibration	6	AM 6.1.2 Cannabinoids by LCQQQ	c-THC @250ng/mL, all others @50 ng/mL
P1-C8	Blood: 100_500 ng/mL	isp blood cannabinoids Poky 2016-3.m	MJ-CAL7.d	Calibration	7	AM 6.1.2 Cannabinoids by LCQQQ	c-THC @500ng/mL, all others @100 ng/mL
P1-C1	Blank	isp blood cannabinoids Poky 2016-3.m	MJ-Carryover blank1.d	Blank		AM 6.1.2 Cannabinoids by LCQQQ	
P1-C9	Blood Negative Control	isp blood cannabinoids Poky 2016-3.m	MJ-NC.d	Sample		AM 6.1.2 Cannabinoids by LCQQQ	Negative Blood UTAK Lot B1013
P1-D1	PC1	isp blood cannabinoids Poky 2016-3.m	MJ-POS Ctrl 1.d	Sample		AM 6.1.2 Cannabinoids by LCQQQ	Positive Control-UTAK B1013 + WS060716
P1-E5	PC3	isp blood cannabinoids Poky 2016-3.m	MJ-POS Ctrl 3.d	Sample		AM 6.1.2 Cannabinoids by LCQQQ	Positive Control-UTAK B1013 + WS060716
P1-C1	Blank	isp blood cannabinoids Poky 2016-3.m	MJ-Blank 3.d	Blank		AM 6.1.2 Cannabinoids by LCQQQ	
P1-D2	M2017-0764	isp blood cannabinoids Poky 2016-3.m	M2017-0764.d	Sample		AM 6.1.2 Cannabinoids by LCQQQ	Blood
P1-D3	M2017-2257	isp blood cannabinoids Poky 2016-3.m	M2017-2257.d	Sample		AM 6.1.2 Cannabinoids by LCQQQ	
P1-D4	M2017-2274	isp blood cannabinoids Poky 2016-3.m	M2017-2274.d	Sample		AM 6.1.2 Cannabinoids by LCQQQ	Blood
P1-D5	M2017-2384	isp blood cannabinoids Poky 2016-3.m	M2017-2384.d	Sample		AM 6.1.2 Cannabinoids by LCQQQ	
P1-D6	M2017-2414	isp blood cannabinoids Poky 2016-3.m	M2017-2414.d	Sample		AM 6.1.2 Cannabinoids by LCQQQ	Blood
P1-D7	P2017-1304	isp blood cannabinoids Poky 2016-3.m	P2017-1304.d	Sample		AM 6.1.2 Cannabinoids by LCQQQ	
P1-D8	PC2	isp blood cannabinoids Poky 2016-3.m	MJ-POS Ctrl 2.d	Sample		AM 6.1.2 Cannabinoids by LCQQQ	Positive Control-UTAK B1013 + WS060716
P1-E6	PC4		MJ-POS Ctrl 4.d	Sample			

Sample Position	Sample Name	Method	Data File	Sample Type	Level Name	Comment	Info.
		isp blood cannabinoids Poky 2016-3.m				AM 6.1.2 Cannabinoids by LCQQQ	Positive Control-UTAK B1013 + WS060716
P1-D9	P2017-1341	isp blood cannabinoids Poky 2016-3.m	P2017-1341.d	Sample		AM 6.1.2 Cannabinoids by LCQQQ	Blood
P1-E1	P2017-1366	isp blood cannabinoids Poky 2016-3.m	P2017-1366.d	Sample		AM 6.1.2 Cannabinoids by LCQQQ	
P1-E2	P2017-1391	isp blood cannabinoids Poky 2016-3.m	P2017-1391.d	Sample		AM 6.1.2 Cannabinoids by LCQQQ	Blood
P1-E3	P2017-1412	isp blood cannabinoids Poky 2016-3.m	P2017-1412.d	Sample		AM 6.1.2 Cannabinoids by LCQQQ	
P1-E4	P2017-1428	isp blood cannabinoids Poky 2016-3.m	P2017-1428.d	Sample		AM 6.1.2 Cannabinoids by LCQQQ	
P1-C1	Blank	isp blood cannabinoids Poky 2016-3.m	MJ-Blank4.d	Blank		AM 6.1.2 Cannabinoids by LCQQQ	Blood

ISP Forensics Calibration Curve Report

16

Batch Data Path C:\MassHunter\Data\2017\CANN\071117 CANN CS\QuantResults\7-11-17 final.batch.bin

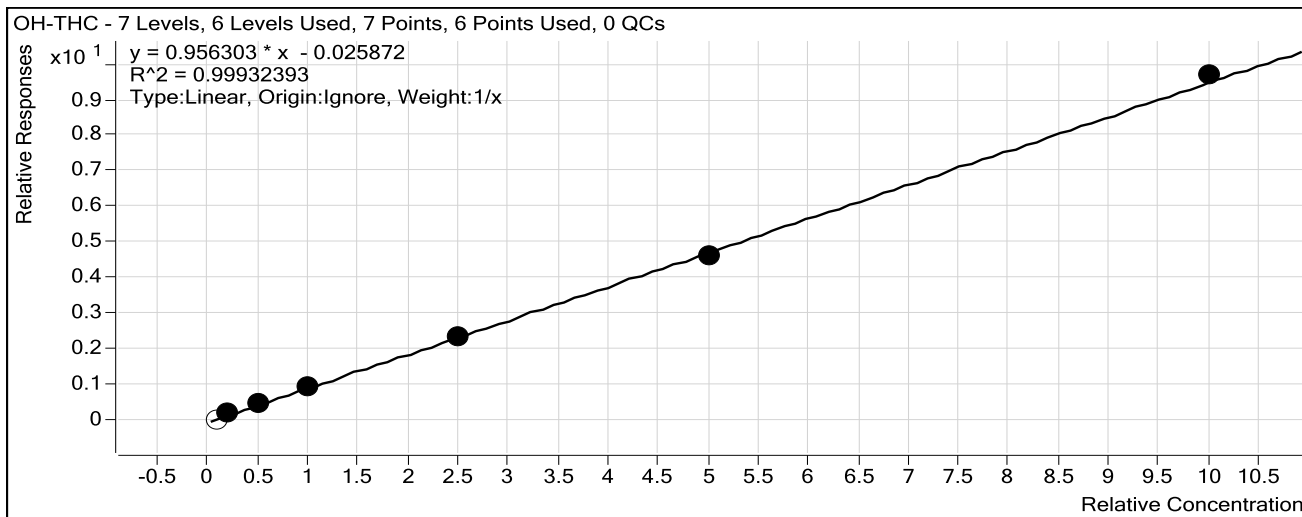
Last Calib Update 7/12/2017 12:38 PM

Analyst Name

ISP TOX

Target Compound OH-THC

Internal Standard OH-THC-d3



Sample	Level	Enabled	Exp Conc	Final Conc	Accuracy
Blood: 1_5 ng/mL	1	<input type="checkbox"/>	1	0.4	42.1
Blood: 2_10 ng/mL	2	<input checked="" type="checkbox"/>	2	1.9	95.1
Blood: 5_25 ng/mL	3	<input checked="" type="checkbox"/>	5	5.3	106.2
Blood: 10_50 ng/mL	4	<input checked="" type="checkbox"/>	10	10.2	102.4
Blood: 25_125 ng/mL	5	<input checked="" type="checkbox"/>	25	24.4	97.4
Blood: 50_250 ng/mL	6	<input checked="" type="checkbox"/>	50	48.7	97.4
Blood: 100_500 ng/mL	7	<input checked="" type="checkbox"/>	100	101.5	101.5

ISP Forensics Calibration Curve Report

5

Batch Data Path C:\MassHunter\Data\2017\CANN\071117 CANN CS\QuantResults\7-11-17 final.batch.bin

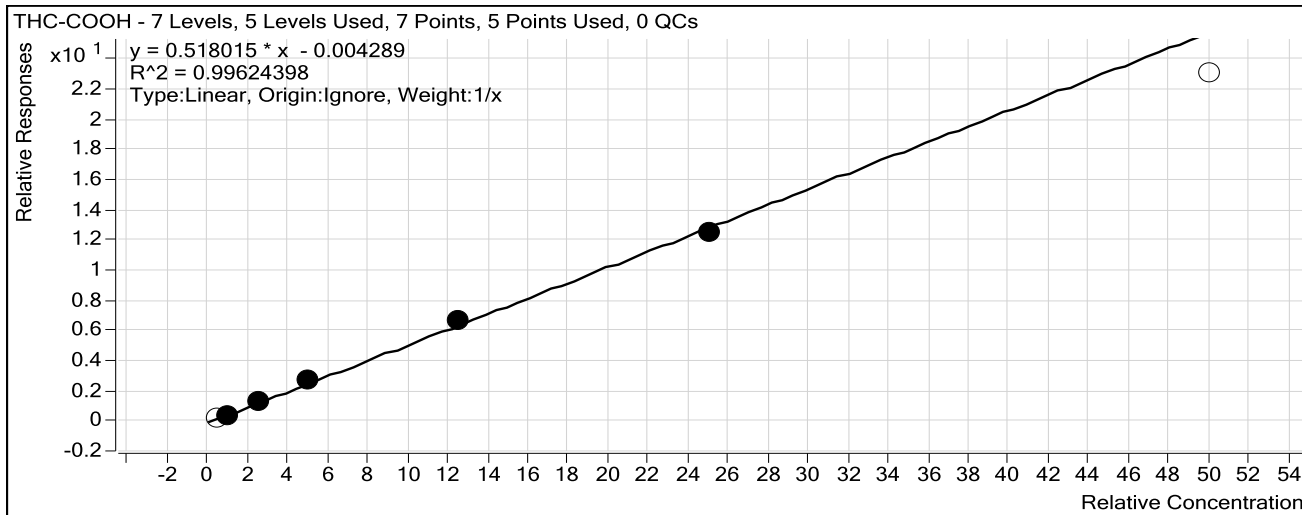
Last Calib Update 7/12/2017 12:38 PM

Analyst Name

ISP TOX

Target Compound *THC-COOH*

Internal Standard *THC-COOH-d3*



Sample	Level	Enabled	Exp Conc	Final Conc	Accuracy
Blood: 1_5 ng/mL	1	<input type="checkbox"/>	5	5.3	105.9
Blood: 2_10 ng/mL	2	<input checked="" type="checkbox"/>	10	8.5	85.1
Blood: 5_25 ng/mL	3	<input checked="" type="checkbox"/>	25	26.6	106.6
Blood: 10_50 ng/mL	4	<input checked="" type="checkbox"/>	50	54.0	108.1
Blood: 25_125 ng/mL	5	<input checked="" type="checkbox"/>	125	130.0	104.0
Blood: 50_250 ng/mL	6	<input checked="" type="checkbox"/>	250	240.9	96.3
Blood: 100_500 ng/mL	7	<input type="checkbox"/>	500	444.4	88.9

ISP Forensics Calibration Curve Report

CS

Batch Data Path C:\MassHunter\Data\2017\CANN\071117 CANN CS\QuantResults\7-11-17 final.batch.bin

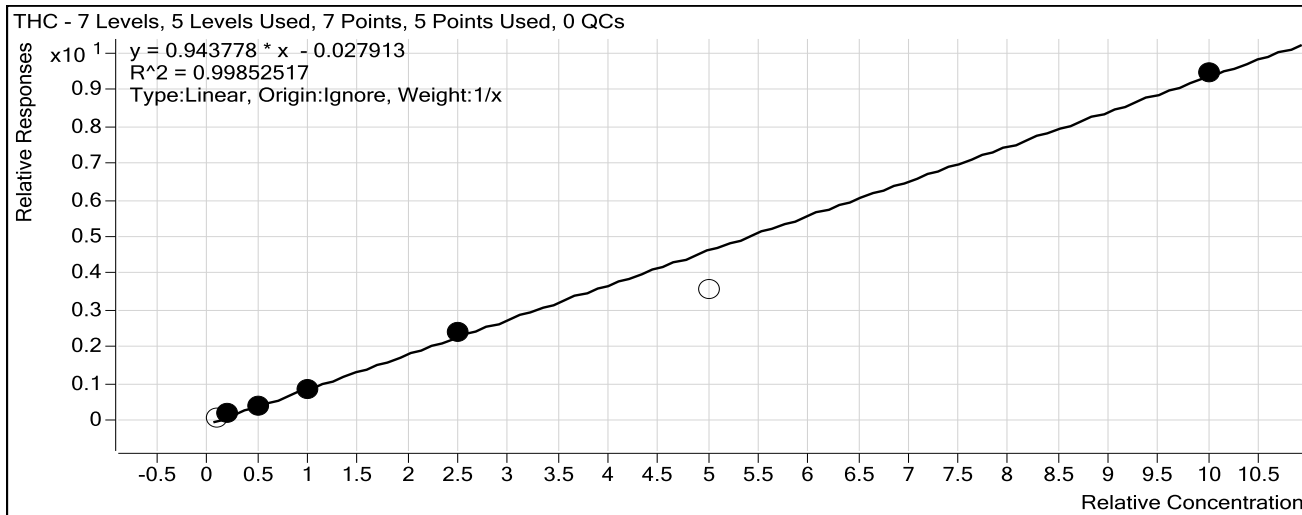
Last Calib Update 7/12/2017 12:38 PM

Analyst Name

ISP TOX

Target Compound *THC*

Internal Standard *THC-d3*



Sample	Level	Enabled	Exp Conc	Final Conc	Accuracy
Blood: 1_5 ng/mL	1	<input type="checkbox"/>	1	1.4	140.2
Blood: 2_10 ng/mL	2	<input checked="" type="checkbox"/>	2	2.3	115.3
Blood: 5_25 ng/mL	3	<input checked="" type="checkbox"/>	5	4.4	88.6
Blood: 10_50 ng/mL	4	<input checked="" type="checkbox"/>	10	9.4	93.6
Blood: 25_125 ng/mL	5	<input checked="" type="checkbox"/>	25	25.5	102.2
Blood: 50_250 ng/mL	6	<input type="checkbox"/>	50	37.9	75.8
Blood: 100_500 ng/mL	7	<input checked="" type="checkbox"/>	100	100.4	100.4

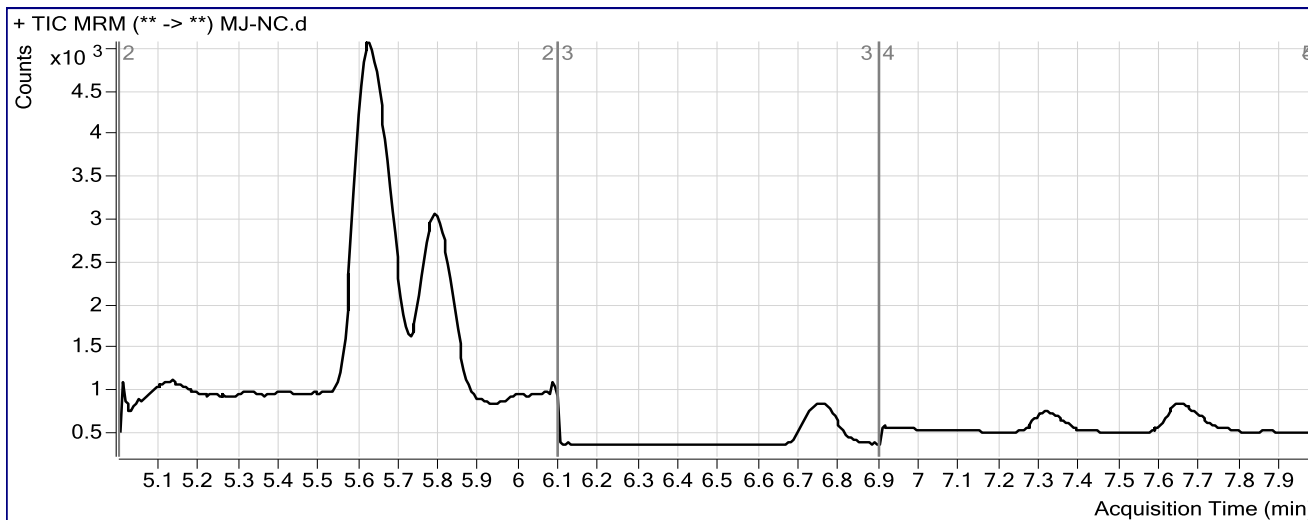
ISP FORENSICS Pocatello Cannabinoid Analysis Report

Batch Data Path	C:\MassHunter\Data\2017\CANN\071117 CANN CS\QuantResults\7-11-17 final.batch.bin		
Analysis Time	7/12/2017 12:38 PM	Analyst Name	ISPUser
Report Time	7/12/2017 2:40 PM	Reporter Name	ISPUser
Last Calib Update	7/12/2017 12:38 PM	Batch State	Processed

Analysis Info

Acq Time	2017-07-11 16:04	Data File	MJ-NC.d
Sample Type	Sample	Sample Name	Blood Negative Control
Dilution	1	Acq Method	isp blood cannabinoids Poky 2016-3.m
Position	P1-C9	Sample Info	Negative Blood UTAK Lot B1013
Inj Vol	-1	Comment	AM 6.1.2 Cannabinoids by LCQQQ

Sample Chromatogram



Results

Compound	ISTD Compound	RT	Response	ISTD Resp	Resp Ratio	Final Conc
OH-THC	OH-THC-d3	5.695	277	21432	0.0129	0.4055

68

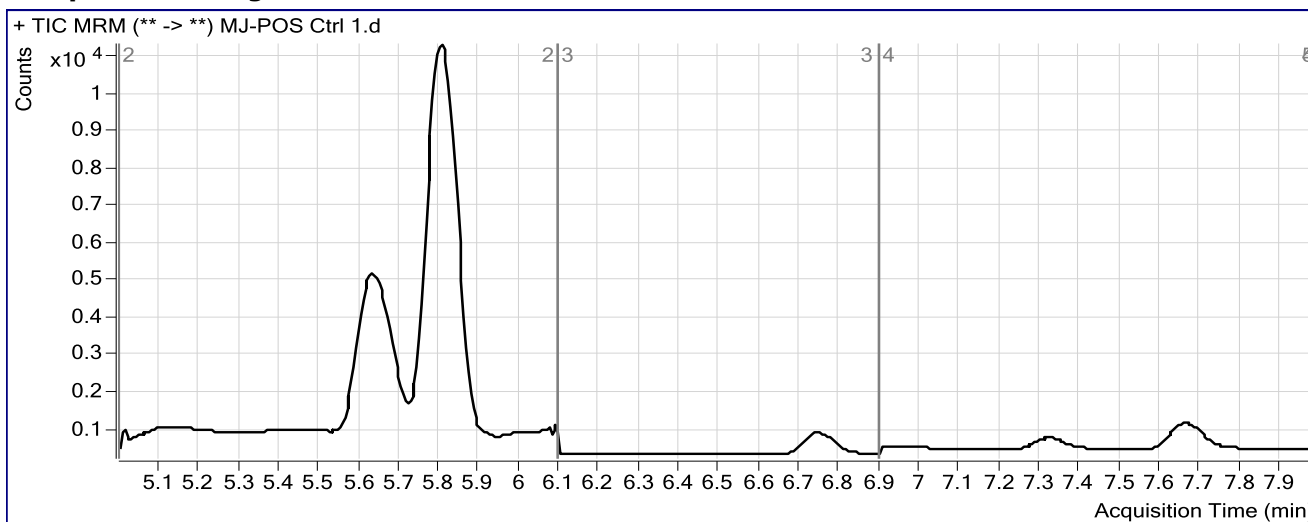
ISP FORENSICS Pocatello Cannabinoid Analysis Report

Batch Data Path C:\MassHunter\Data\2017\CANN\071117 CANN CS\QuantResults\7-11-17 final.batch.bin
Analysis Time 7/12/2017 12:38 PM **Analyst Name** ISPUser
Report Time 7/12/2017 2:40 PM **Reporter Name** ISPUser
Last Calib Update 7/12/2017 12:38 PM **Batch State** Processed

Analysis Info

Acq Time 2017-07-11 16:17 **Data File** MJ-POS Ctrl 1.d
Sample Type Sample **Sample Name** PC1
Dilution 1 **Acq Method** isp blood cannabinoids Poky 2016-3.m
Position P1-D1 **Sample Info** Positive Control- UTAK B1013 + WS060716
Inj Vol -1 **Comment** AM 6.1.2 Cannabinoids by LCQQQ

Sample Chromatogram



Results

Compound	ISTD Compound	RT	Response	ISTD Resp	Resp Ratio	Final Conc
OH-THC	OH-THC-d3	5.673	343	21631	0.0159	0.4363
THC-COOH	THC-COOH-d3	5.804	8084	4197	1.9259	37.2610
THC	THC-d3	7.669	773	976	0.7928	8.6958

CS

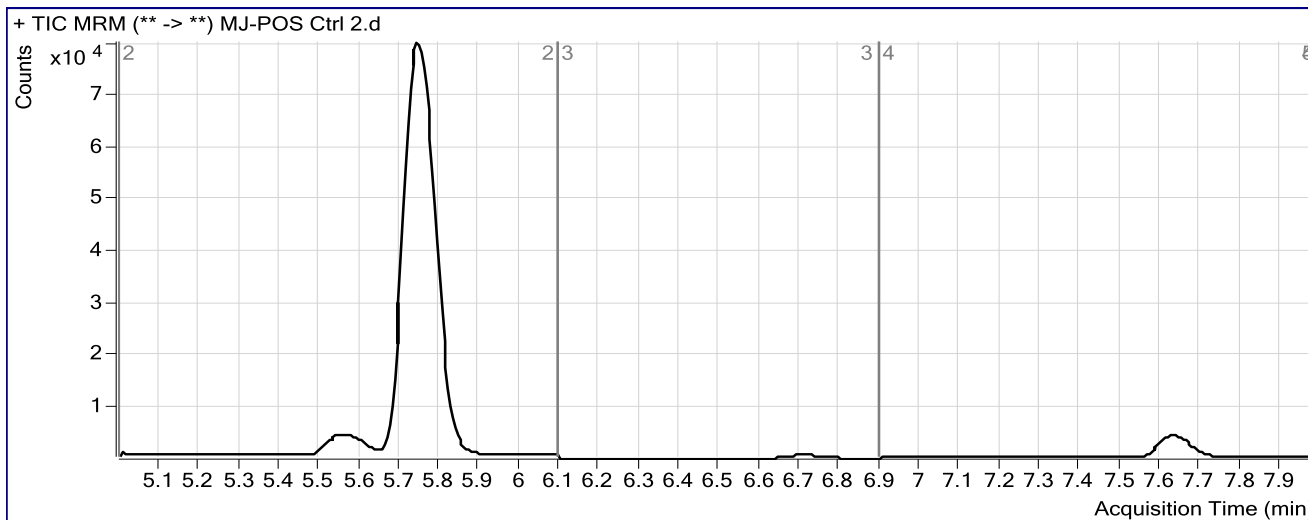
ISP FORENSICS Pocatello Cannabinoid Analysis Report

Batch Data Path C:\MassHunter\Data\2017\CANN\071117 CANN CS\QuantResults\7-11-17 final.batch.bin
Analysis Time 7/12/2017 12:38 PM **Analyst Name** ISPUser
Report Time 7/12/2017 2:41 PM **Reporter Name** ISPUser
Last Calib Update 7/12/2017 12:38 PM **Batch State** Processed

Analysis Info

Acq Time 2017-07-11 18:17 **Data File** MJ-POS Ctrl 2.d
Sample Type Sample **Sample Name** PC2
Dilution 1 **Acq Method** isp blood cannabinoids Poky 2016-3.m
Position P1-D8 **Sample Info** Positive Control- UTAK B1013 + WS060716
Inj Vol -1 **Comment** AM 6.1.2 Cannabinoids by LCQQQ

Sample Chromatogram



Results

Compound	ISTD Compound	RT	Response	ISTD Resp	Resp Ratio	Final Conc
OH-THC	OH-THC-d3	5.594	372	21850	0.0170	0.4485
THC-COOH	THC-COOH-d3	5.743	79076	4226	18.7133	361.3321
THC	THC-d3	7.630	8452	1099	7.6904	81.7806